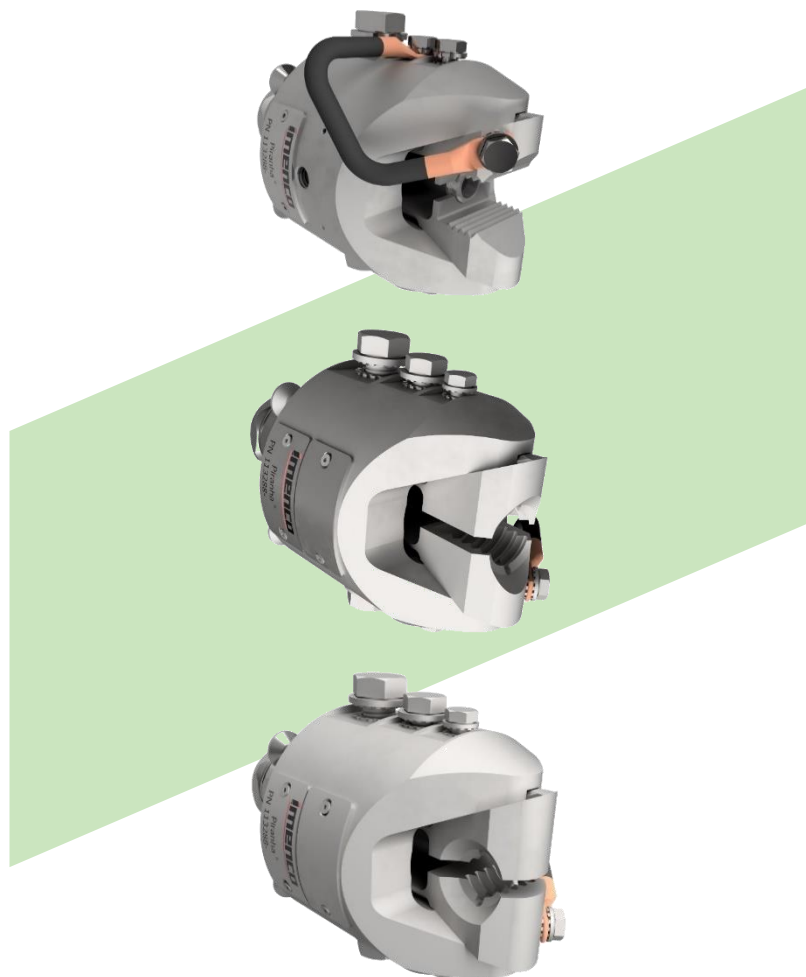
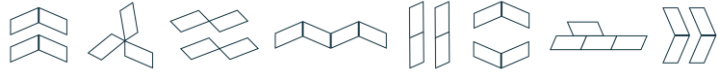


PIRANHA[®] S CLAMP



The Piranha[®] clamp is designed to provide a mechanical and electrical connection to structural details like steel plates, profiles, and axial or radial rods.



Intelligence built in

The main benefits of choosing an IMENCO Retrofit Anode Clamp are the ease of installation and flexible use. The clamp is guided into place by a ROV and tensioned with a torque tool to ensure a good Connection.

Most subsea structures and components have some sort of plate or bar as part of their design. This makes the Piranha S® Clamp the most versatile IMENCO Retrofit Anode Clamp for any structural element. Piranha® S is equipped with a range of different jaws and offers flexibility to the interfacing process.

Piranha® S is typically used for the placement of sacrificial anodes, electrical continuity between different entities or to connect instrument packages to a structure. Anodes may be attached directly to the clamp, or by a bonding cable to an anode sled/anode bank.

Features

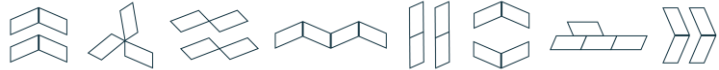
- Field proven with more than 3000 clamps installed
- Simple and robust in design
- Durable and compact design dimensions
- Excellent mechanical grip
- Quickly diver-less ROV installation
- Anode attachment flexibility, clamping on plate edges or ends of rods
- Designed for a variety of plate/rod thicknesses
- Standardized installation tool and ROV interface

Advantages

- Quick installation, typically takes 15min to install a clamp
- Provides excellent mechanical attachment, Typically, > 10 ton
- Provides excellent electrical contact / grounding, Typically, <100 μΩ connection resistance
- Mechanical grip (tension)
 - Will not loosen by vibration
 - Fatigue resistant against expected loads
- Electrical Resistance – house to connected structure
 - Can be used on coated or uncoated structures.
 - Will bite through existing rust layers on structures

Applications and options

The Piranha® Clamps has a proven track record of being easy to install and providing a very strong hold and an effective electrical connection. By use of a hydraulic torque tool, the clamps are installed onto plates or rods, consistently and without any unnecessary strain on the ROVs.



RETROFIT ANODE

PIRANHA® S CLAMP

The Piranha® S clamp is primarily composed of the housing, and the jaw. The housing design is suitable across the entire 5-35mm range. The jaw size is selected on a project-specific basis as per the below table.

Clamp Type	Plate Thickness (mm)	Clamp Dimensions (mm)							Weight
		A	B	C	∅D	E	F	G	
Piranha® S	5-10 mm	75	20	125	115	4-11	37	46	8 kg
Piranha® S	10-15 mm	75	20	125	115	9-16	37	46	8 kg
Piranha® S	15-20 mm	75	20	125	115	14-21	37	46	7,9 Kg
Piranha® S	20-25 mm	75	20	125	115	19-26	37	46	7,9 Kg
Piranha® S	25-30 mm	75	20	125	115	24-31	37	46	7,8 Kg
Piranha® S	30-35 mm	75	20	125	115	29-36	37	46	7,8 Kg

Clamp Type	Axial Rod	A	B	C	∅D	E	F	G	Weight
Piranha® S	13-18 mm	75	20	125	115	12-19	37	46	8 Kg
Piranha® S	17-22 mm	75	20	125	115	16-23	37	46	8 Kg
Piranha® S	22-26 mm	75	20	125	115	21-27	37	46	8 Kg

Clamp Type	Radial Rod	A	B	C	∅D	E	F	G	Weight
Piranha® S	13-18 mm	75	20	125	115	12-19	37	46	8 Kg
Piranha® S	22-26 mm	75	20	125	115	21-27	37	46	8 Kg

